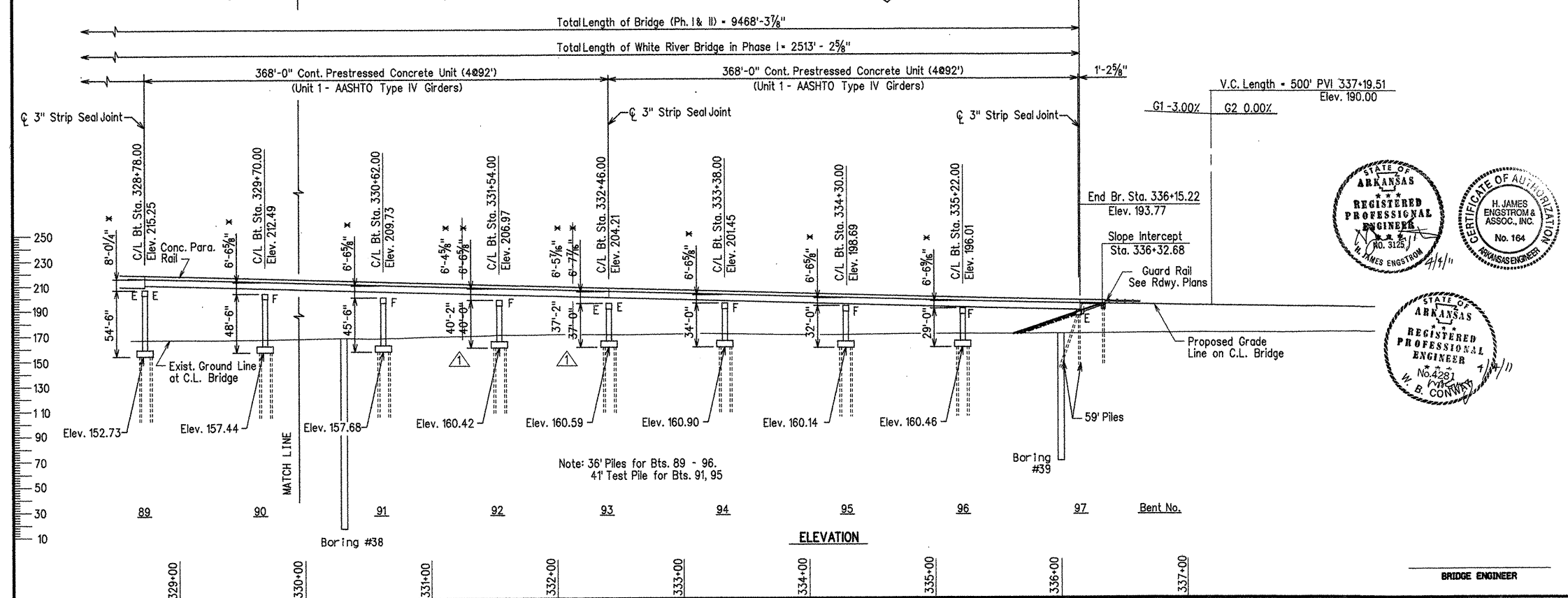
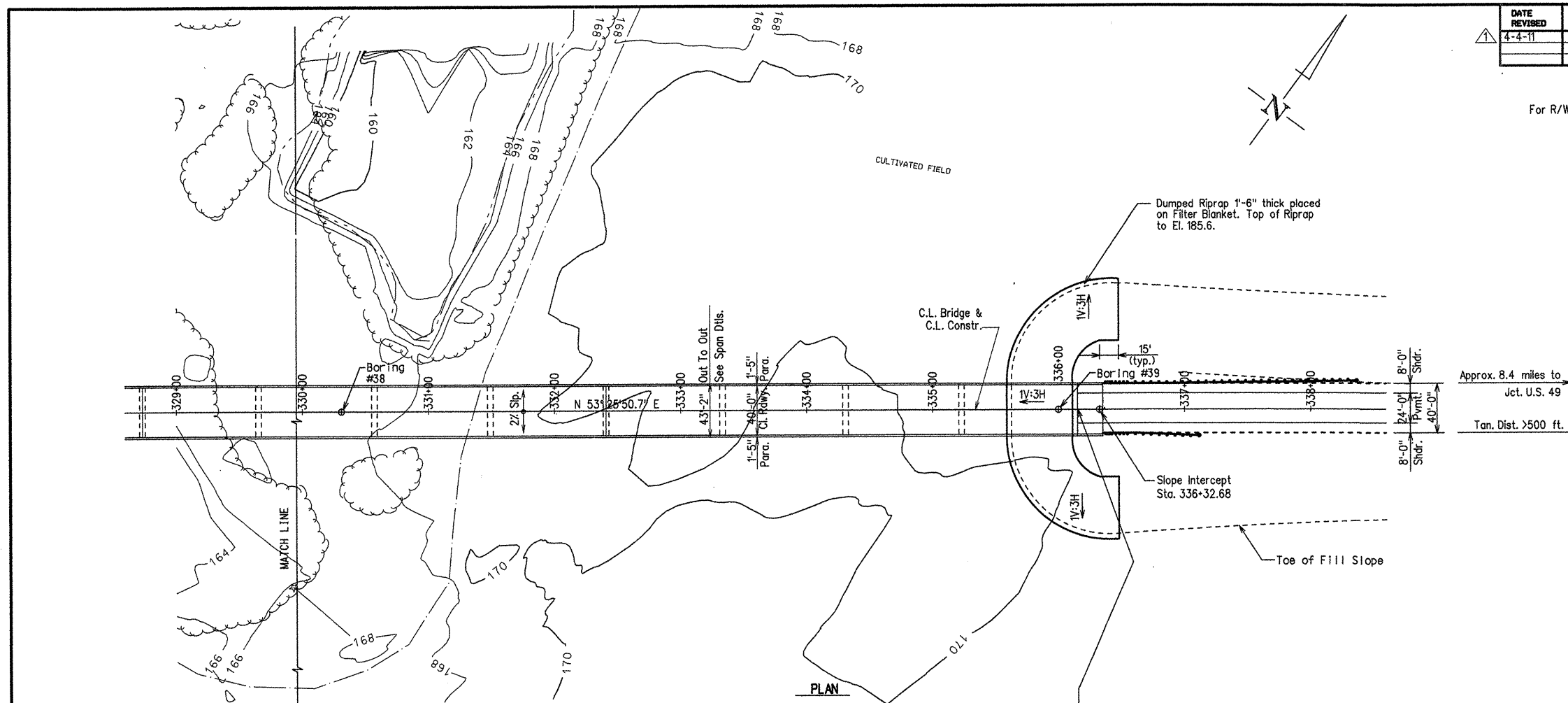


DATE REVISED	DATE FILMED	DATE REVISED	DATE FILMED	FED. ROAD DIST. NO.	STATE	FED. AID PROJ. NO.	SHEET NO.	TOTAL SHEETS
4-4-11				6	ARK.	1 10394	47	196
				JOB NO.	LAYOUT		41959	

For R/W Data - See Rdwy. Plans



Use Type Special Approach Slabs & Type Special Gutters at Bridge end - See dwg. nos. 41904 & 41905.

1 Revised Dimensions at Bents 92 & 93 by HJE/MM WBC 4-4-11
 * Top of Deck at C.L. Bridge and C.L. Bent to Low End of Cap

Strip Seal Joints are designated as "X" Strip Seal Joints where "X" represents the "A" dimension at 60 degrees F as shown in the table on dwg. no. 42008-42011.

Note: See dwgs. no. 41961 - 41962 for Soil Borings & additional data. See dwg. no. 41960 for General Notes. See dwg. no. 41957 for Hydraulic Data Table.

ALTERNATE NO. 1
 LAYOUT OF BRIDGE OVER WHITE RIVER
 (SHEET 4 OF 4)
 WHITE RIVER STR. & APPRS.
 (CLARENDON) (PH. I) (F)
 MONROE COUNTY
 ROUTE 79 SEC. 13
 ARKANSAS STATE HIGHWAY COMMISSION
 LITTLE ROCK, ARK.

Engstrom / Modjeski and Masters
 DRAWN BY: LKD/TAD DATE: Nov. 07 FILENAME: b1103941_14.dgn
 CHECKED BY: FS DATE: Feb. 06 SCALE: 1" = 50'-0"
 DESIGNED BY: YO DATE: Feb. 06
 BRIDGE NO. 06830 DRAWING NO. 41959

